

Taxonomy and systematics

“Long time no see”: redescription of *Orientattractis leiperi* (Nematoda: Atractidae) parasite of *Podocnemis unifilis* (Testudines: Podocnemididae) from Pará State, Brazil

“Largo tiempo sin verte”: redescrición de *Orientattractis leiperi* (Nematoda: Atractidae) parásito de *Podocnemis unifilis* (Testudines: Podocnemididae) del estado de Pará, Brasil

Ronald F. Jesus, Evelyn L. Cardoso, Yuri Willkens, Adriano P. Furtado,
Jeannie N. dos Santos, Francisco T. V. Melo *

Laboratório de Biologia Celular e Helminologia “Profa Dra Reinalda Marisa Lanfredi”, Instituto de Ciências Biológicas, Universidade Federal do Pará, Av. Augusto Corrêa 01 - Guamá, 66075-110 Belém, Pará, Brazil

*Corresponding author: ftiago@ufpa.br (F.T.V. Melo)

Received: 03 April 2020; accepted: 25 May 2020

Abstract

During a helminthological survey on freshwater turtles from the Brazilian Amazon, we collected fresh and well-preserved nematodes from the stomach of *Podocnemis unifilis* Troschel, 1848, that resembled *Orientattractis leiperi*. The morphology and morphometry of specimens described herein fits those from the original description. We also observed important morphological characters not reported previously or not properly described, and those are reported here for the first time: the structure of the excretory pore (surrounded by radial cuticle striations), structure and position of deirids, phasmids, oral papillae and the presence of a dorsolateral pair of papilla in caudal region. The present work provides a detailed redescription for *O. leiperi*, 50 years after its original description, adding a new host and locality for this species.

Keywords: Turtle parasites; Brazilian Amazon; Atractidae; *Orientattractis leiperi*

Resumen

Durante el análisis helmintológico de tortugas de agua dulce en la Amazonía brasileña, fueron extraídos del estómago de *Podocnemis unifilis* Troschel, 1848, nemátodos que parecían pertenecer a la especie *Orientattractis leiperi*; estos ejemplares fueron utilizados para realizar la redescrición de esta especie mediante microscopía óptica y microscopía electrónica de barrido. La morfología y morfometría de los ejemplares analizados en este estudio se ajustaron a la descripción original. Importantes caracteres morfológicos que no fueron considerados previamente o que no fueron descritos adecuadamente, se detallan por primera vez en este trabajo: la estructura del poro excretor (rodeado de estrías radiales cuticulares), estructura y posición de las papilas cervicales, fasmidios y papilas orales,

distribución y disposición de las papilas caudales en los machos y la presencia de un par de papilas dorsolaterales en la región caudal. Este trabajo presenta una redescipción detallada de *O. leiperi*, 50 años después de su descripción original, adicionando un nuevo hospedador y nueva localidad para la misma.

Palabras clave: Parásitos de tortugas; Amazonía brasileña; Atractidae; *Orientatractis leiperi*

Introduction

The family Atractidae Railliet, 1917, includes 26 genera of intestinal parasitic nematodes of fish, amphibians and reptiles. Among those genera, *Atractis* Dujardin, 1845; *Buckleyatractis* Khalil & Gibbons, 1988; *Klossinemella* Costa, 1961; *Orientatractis* Petter, 1966; *Paraorientatractis* Gibbons, Khalil & Marinkelle, 1997; *Paratractis* Sarmiento, 1959; *Pneumotractis* Bursey, Reavill & Greiner, 2009; *Podocnematractis* Gibbons, Khalil & Marinkelle, 1995; and *Rhinoclemmysnema* Gibbons & Platt, 2006, are commonly found as parasites of freshwater turtles (Berenguer, 1947; Bursey et al., 2009; Costa et al., 1968; Gibbons & Platt, 2006; Gibbons et al., 1995, 1997; Khalil & Gibbons, 1988; Petter, 1966; Sarmiento, 1959).

The genus *Orientatractis* was erected to accommodate *Orientatractis levanhoai* Petter, 1966 of *Indotestudo elongata* (Blyth, 1854) from Vietnam, that showed unique shape, number and disposition of sclerotized structures surrounding the oral opening (Petter, 1966). Until now, 10 valid species are known for this genus: *Orientatractis asymmetrica* Gibbons & Platt, 2006; *Orientatractis brycini* González-Solís & Mariaux, 2017; *Orientatractis campechensis* González-Solís & Moravec, 2004; *Orientatractis chiapasensis* González-Solís & Moravec, 2004; *Orientatractis hamabatrachos* Bursey, Goldberg & Kraus, 2014; *Orientatractis leiperi* Buckley, 1969; *Orientatractis levanhoai* Petter, 1966 (type-species of the genus); *Orientatractis longicaudata* Liu, Li & Zhang, 2018; *Orientatractis mekongensis* Moravec, Kamchoo & Pachawan, 2015; and *Orientatractis moraveci* Cavalcante, Silva, Santos, Chagas-Moutinho & Santos, 2017 (Buckley, 1969; Bursey et al., 2014; Cavalcante et al., 2017; Gibbons & Platt, 2006; González-Solís & Mariaux, 2017; González-Solís & Moravec, 2004; Liu et al., 2018; Moravec et al., 2015; Petter, 1966).

During a helminthological survey of parasites of freshwater turtles from the Amazon region, we collected and examined parasites of *Podocnemis unifilis* Troschel, 1848. The turtles harbored countless nematodes in the stomach, which belong to *O. leiperi* that has not been reported since its original description (51 years ago). Buckley (1969) mentioned that specimens found in the intestines of *Podocnemis vogli* Müller, 1935 from Colombia were partially decomposed, especially the

internal organs such as the ovary and the uterus which in consequence could not be described or illustrated adequately. Thus, the redescription of *O. leiperi* is herein presented, adding new morphometric data, new host, and locality for the species.

Materials and methods

Two specimens of *P. unifilis* were collected from Tocantins River, Tucuruí municipality, Pará, Brazil (8°5'8.797" S, 48°6'48.78" W) (license permission SISBIO: 53527-4). Hosts were anesthetized using Ketamine 2% injection and posteriorly euthanized. Internal organs were removed and examined under a LEICA EZ4 stereo-microscope. Nematodes collected were washed in 0.9% saline solution and fixed in A.F.A solution (2% glacial acetic acid, 3% formaldehyde, and 95% ethanol 70 °GL). For morphological and morphometric analyses, specimens were cleared in Aman's Lactophenol, mounted on temporary slides and examined under an Olympus BX41 light microscope with a drawing tube attached.

For scanning electron microscopy, some specimens were post-fixed in 1% OsO₄, dehydrated in ethanol series, critical-point dried, coated with gold-palladium, mounted in stubs and analyzed under a Vega3 Microscope (TESCAN, Brno, Czech Republic) at the Laboratory of Embryology and Histology of the Federal Rural University of Amazonia.

Measurements are shown in micrometers, unless otherwise stated. We tried to access the type material deposited in the London School of Hygiene and Tropical Medicine, however they were missing or absent. We also checked the collection of the Natural History Museum of London, in case of transference of the original collection or donation of specimens, but we could not find the type series. Given the significance of these findings, the neotypes have been deposited in the Helminthological Collection of Oswaldo Cruz Institute, Brazil, one of the most important parasite collections in the country and has an important tradition in parasite studies world-wide.

Redescription

Family Atractidae (Railliet, 1917 subfam.) Travassos, 1919

Genus *Orientatractis* Petter, 1966

Orientatractis leiperi Buckley, 1969 (Figs. 1, 2)

General. Small and slender nematodes, with cuticle finely transversely striated. Anterior end rounded (Fig. 1A, B). Lateral alae well developed starting from first third of esophagus, ending at dorsolateral pair of cauda papillae in posterior extremity of body (Figs. 1B, E, 2B, C). Oral aperture irregular, hexagonal to circular, surrounded by 8 submedian papillae in 2 circles, each with 4 papillae. Six lips: 4 submedian (2 subdorsal and 2 subventral) each lip bearing a well-sclerotized, recurved, pointed spines joined at the base and a single large median spine. Two lateral lips bearing amphidial pores and a well-sclerotized U-shaped structure, small spines posterior to each amphidial pore (Figs. 1C, 2A). Esophagus divided into muscular anterior portion and glandular posterior portion ending in a well-developed bulb with sclerotized valves. Nerve ring situated at anterior portion of esophagus, just after muscular portion (Fig. 1A, B, D). Deirids small, located at level of nerve ring. Excretory pore slightly anterior to esophageal bulb, aperture surrounded by radial cuticle striations, pore opening in a large chamber with transversal grooves (Figs. 1A, B, D, 2F). Posterior end with very slender, long, pointed tail (Figs. 1A, B, E, F, G, 2B).

Male (Based on neotype; measurements of 11 paraneotypes in parentheses). Total length 3.21 (3.12-3.37) mm, width at esophago-intestinal junction 152 (107-168). Lateral alae beginning 285 (237-285) from anterior end of body, ending 485 (360-485) from posterior end of body. Esophagus 632 (571-776) long, muscular portion 253 (181-253), glandular portion including esophageal bulb 379 (352-595). Esophageal bulb 107 (96-125) × 93 (64-96). Nerve ring, excretory pore and deirids 280 (203-280), 499 (435-499) and 256 (213-256), respectively, from anterior end of body. Nine pairs of caudal papillae plus 1 unpaired anterior to cloacal lip, of which 3 subventral precloacal pairs, 1 subventral adcloacal pair and 5 postcloacal pairs (3 subventral, 1 ventrolateral and 1 dorsolateral) (Figs. 1E, G, 2C-E). Phasmids located between pairs 4 and 5 of postcloacals papillae (Figs. 1E, 2E). Spicules unequal, lanceolate, proximal ends slightly expanded, distal ends sharply pointed, with transverse striations along their lengths, left spicule 472 (416-491), right spicule 103 (90-119) (Fig. 1I). Gubernaculum with proximal end expanded, deep medial depression, distal end pointed, 64 (58-69) long (Fig. 1H). Tail long, pointed, ventrally curved, 739 (648-781) long (Figs. 1B, E, G, 2B).

Females (Based on neotype female; measurements of 11 paraneotypes in parentheses). Total length 3.64 (3.31-3.68) mm, width at esophago-intestinal junction 160 (128-187). Lateral alae beginning 253 (219-253) from anterior end of body, ending 774 (721-847) from posterior end of body. Esophagus 590 (525-619) long, muscular

portion 187 (171-216), glandular portion including esophageal bulb 403 (352-432). Esophageal bulb 99 (80-133) × 120 (101-131). Nerve ring, excretory pore and deirids 208 (179-232), 453 (387-488) and 221 (213-261), respectively, from anterior end of body. Viviparous, vulva aperture surrounded by radial cuticle striations with posterior lip slightly elevated, situated 0.96 (0.96-1.08) mm from posterior end of body (Fig. 2G), anterior to anal opening (Fig. 1A, F). Distance anus-vulva 99 (93-109). Vagina muscular, first portion anteriorly directed, flexed posteriorly. Ovary directed anteriorly to vagina. Monodelphic, prodelphic, uterus beginning in posterior flexion of vagina, directing anteriorly, containing fully developed larvae. Larvae total length 363 and 334 (n = 2, measured in uteri of neotype; Fig. 1A). Eggs 171-139 × 64-51 (n = 7, measured in uteri of neotype). Tail subulate, 900 (874-989) long (Fig. 1A, F).

Taxonomic Summary

Neotype host: *Podocnemis unifilis* Troschel, 1848.

Neotype locality: Rio Tocantins Tucuuruí, Pará, Brazil (8°5'8.797" S, 48°6'48.78" W).

Type-specimens: neotype male [here designed] (CHIOC 38765a), neotype female (CHIOC 38765b) and 22 paraneotypes (CHIOC 38765c-38765d) in the Helminthological Collection of Oswaldo Cruz Institute - Rio de Janeiro, Brazil.

Site of infection: stomach.

Prevalence: 2 infected/2 examined hosts; intensity of infection: countless nematodes per turtle.

Remarks

Here we redescribe *Orientatractis leiperi* based on specimens found in the stomach of *P. unifilis* from the Brazilian Amazon Region. The original description of *O. leiperi* was based on specimens collected from *Podocnemis vogli* sent to Buckley by Dr. C. J. Marinkelle from Colombia. The neotype described here was found in the same biogeographical region (Neotropical Region, Tucuuruí, Pará, Brazil) and ecological biome (Amazon Region), parasitizing a species of host from the same genus (*Podocnemis unifilis*).

The specimens were allocated to this genus by the presence of 4 single horns surrounding the mouth. According to González-Solis and Moravec (2004), *Orientatractis* and *Klossinemella* Costa, 1961, are morphologically similar genera, differing by the number and disposition of sclerotized structures surrounding the oral opening: *Klossinemella* spp. are characterized by the presence of 8 Y-shape well-sclerotized with 2 pointed tips and 4 single horns, while *Orientatractis* have 4 bicornuate pieces and 4 single horns.

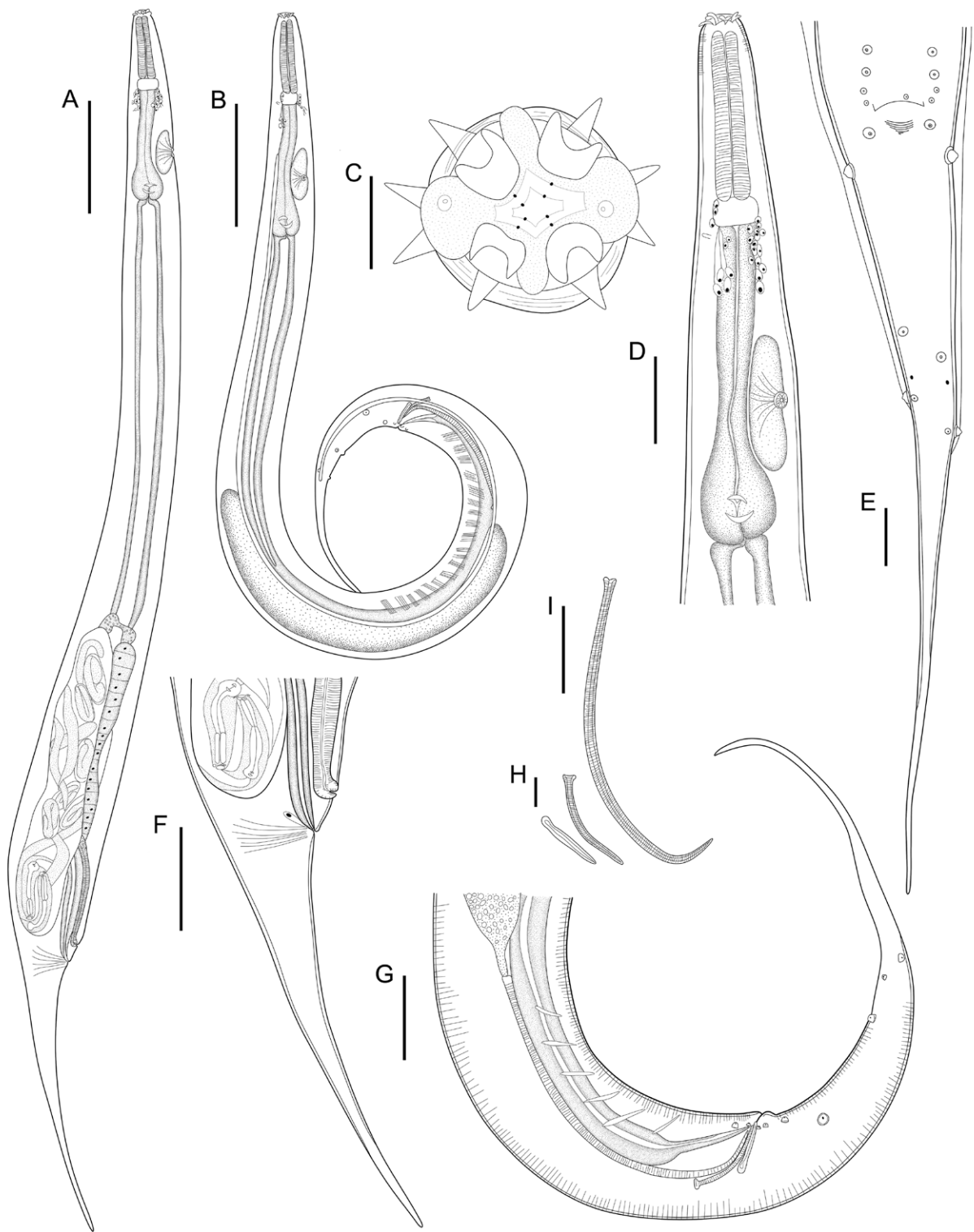


Figure 1. *Orientatractis leiperi* Buckley, 1969. A, Female, lateral view; B, male, lateral view; C, cephalic end, apical view; D, male, anterior extremity, lateral view; E, male, posterior extremity ventral view; F, female, posterior extremity, lateral view; G, male, posterior extremity, lateral view; H, Gubernaculum I, Spicules. Scale-bars: A, B, 350 µm; C, H, 30 µm; D, E, I, 100 µm; F, 200 µm; G, 50 µm.

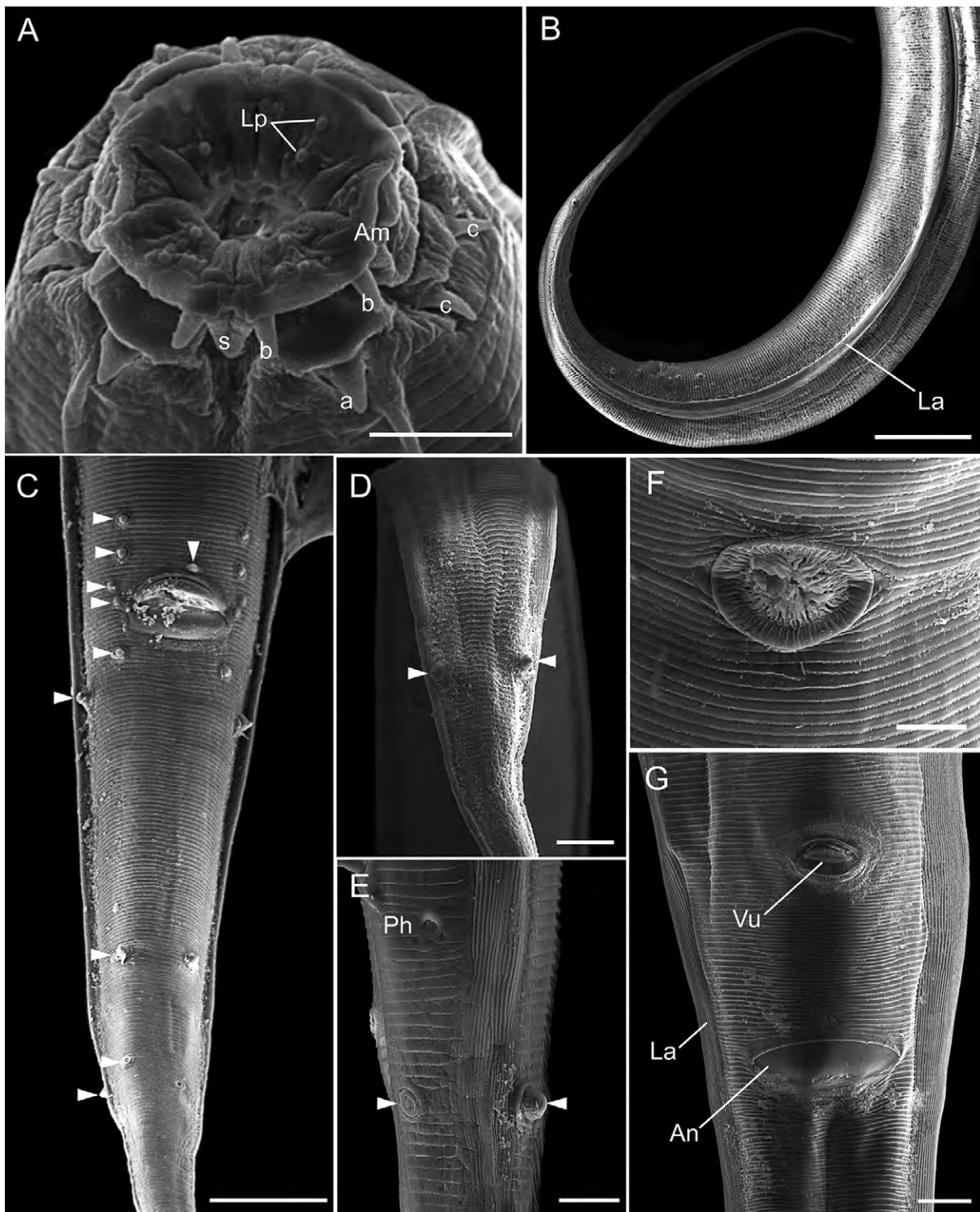


Figure 2. Scanning electron micrographs of *Orientattractis leiperi* Buckley, 1969. A, Cephalic end, subapical view; B, posterior extremity of male; C, D, male posterior extremity, ventral and dorsal views, respectively; E, tail of male, lateral view; F, excretory pore; G, female posterior end, ventral view. a, Single large submedian spine; am, amphidial pores; An, anus; arrowheads, caudal papillae; b, submedian pointed spines; c, lateral spines; La, lateral alae; Lp, submedian labial papillae; Ph, phasmids; s, sub globular contour between submedian lips; Vu, vulva. Scale-bars: A, E, F 10 μ m; B, 100 μ m; C, 50 μ m; D, 20 μ m; G, 25 μ m.

The morphological characteristics used to differentiate the species of this genus are number and distribution of caudal papillae shape and size of spicules, gubernaculum and morphology and length of tail. Our specimens have 9 pairs of caudal papillae and among the 10 valid species of the genus, *O. asymmetrica*, *O. campechensis*, *O. chiapasensis* and *O. leiperi* share this morphological trait. However, the specimens found in the present work can be differentiated from *O. asymmetrica* because the last species have a pair of double papillae at the precloacal region and enlarged on the right side (not observed in our specimens). Additionally, the specimens of the present work have larger spicules (left 416-491 and right 90-119 spicules vs. left 220-239 and right 86-104 spicules in *O. asymmetrica*) and the presence of a dorsal caudal papillae, which is absent in *O. asymmetrica*.

The specimens described herein, resembles *O. campechensis* by the number of cloacal papillae and the size of spicules and gubernaculum. However, our specimens have a gubernaculum with proximal end expanded, deep medial depression and pointed distal end, while *O. campechensis* have a gubernaculum with a proximal end showing a deep depression forming 2 branches and a dorsal pointed barb, and the females of *O. campechensis* have a vulvar appendix or elevated vulvar lips.

Orientattractis leiperi found in the stomach of *Podocnemis unifilis* are similar to *O. chiapasensis* by number of cloacal papillae, however *O. leiperi* differ by the number of post cloacal papilla (5 vs. 4 in *O. chiapasensis*), larger body length (males 3.12-3.37 mm, females 3.31-3.68 mm vs. males 2.709-2.967 mm, females 2.025-3.800 mm in *O. chiapasensis*), larger spicules (left spicule 416-491, right spicule 90-119 vs. left spicule 204-238, right spicule, 60-68 in *O. chiapasensis*).

Thus, our specimens can be allocated to *O. leiperi* by the combination of the following characters: number and distribution of cloacal papillae, size and shape of spicules and gubernaculum and tail length. The specimens of *O. leiperi* from *P. unifilis* did not show a substantial intraspecific variation of the metrical data, especially when compared with the measurements of the original description. In our specimens, males are smaller than *O. leiperi* described by Buckley (1969) (3.12-3.37 vs. 3.80), we also observed differences in total length of esophagus in females (525-619 vs. 660 in original description) and right spicules and gubernaculum of males are smaller in our specimens (right spicule: 90-119 vs. 160, gubernaculum 58-69 vs. 76). However, morphometric variability always occurs intraspecifically, which according to González-Solis and Moravec, (2004) might be associated with local ecological conditions and physiological traits of hosts.

According to Buckley (1969), the description of *O. leiperi* was based in specimens partially deteriorated, thus the description and illustration of the uterus was incomplete; moreover, the author found embryonated eggs in only one female. Since the type material seems to be lost, our specimens are herein considered as neotypes, which fit the original description by Buckley (1969). Fresh specimens allowed us to verify that females are monodelphic, prodelphic. Additionally, our specimens harbored eggs and fully developed larva in uterus.

The life cycle of *Orientattractis* spp. is still unknown, however according to studies done in other Atractidae members, these nematodes are viviparous, and larvae develop directly in uterus allowing the auto infection (Anderson, 2000). We found countless specimens of *O. leiperi* in the stomach of *P. unifilis* and the viviparity can considerably contribute with the development of adult nematodes directly in the infected organ, increasing the abundance of infection. Additionally, according to Leão et al. (2019), the zones of intensive use of habitat are usually overlapped among specimens of *P. unifilis*, where the turtles share areas for feeding, copulating, basking, and parental care, which can contribute to the transmission of this species of nematodes.

Our SEM analyses were important to observe the complexity of oral aperture and cephalic papillae, lateral alae, structure of excretory pore, vulva, anus and structures not described by Buckley (1969), such as the presence of dorsolateral caudal papillae in males, phasmids, and cephalic papillae.

This study is the first report of *O. leiperi* in the Brazilian Amazon region, in a different host species, and encountered after 50 years since its original description.

Acknowledgements

To Missiene Maria da Silva for her support in host necropsies and collection of nematodes; to Márcio André da Silva Dias and Rael Correia de Miranda for helping with line drawings composition; to Elane Guerreiro Giese, from the Laboratory of Animal Embriology and Histology from the Universidade Federal da Amazônia, Belém, for her technical support with the SEM analyses. This work was supported by CAPES/PPGBAIP/UFPA the National Council for Scientific and Technological Development (CNPq) (grant number 431809/2018-6 Universal); CNPq Research grant productivity to MELO, F. T. V. (Process N° 304955/2018-3) and SANTOS, J. N. (Process N° 305552/2019-8). This study is part of the master's dissertation of Ronald Ferreira de Jesus in the Graduate Program in Biology of Infectious and Parasitic Agents

[Programa de Pós-Graduação em Biologia de Agentes Infecciosos e Parasitários] ICB-UFPA.

References

- Anderson, R. C. (2000). *Nematode parasites of vertebrates. Their development and transmission*. Wallingford, Oxon: CABI Publishing.
- Berenger, J. G. (1947). Revisión de la familia Atractidae Travassos, 1920 con descripción de dos nuevas especies. *Revista Ibérica de Parasitología*, 7, 3–90.
- Buckley, J. J. C. (1969). On a remarkable oxyurid nematode, *Orientattractis leiperi* n. sp., (Atractidae) from a South American tortoise, *Podocnemis vogli*. *Journal of Helminthology*, 43, 281–286. <https://doi.org/10.1017/S0022149X0000482X>
- Burse, C. R., Goldberg, S. R., & Kraus, F. (2014). New species of *Orientattractis* (Nematoda: Atractidae), new species of *Rondonia* (Nematoda: Atractidae) and other helminths in *Austrochaperina basipalmata* (Anura: Microhylidae) from Papua New Guinea. *Acta Parasitologica*, 59, 115–121. <https://doi.org/10.2478/s11686-014-0217-3>
- Burse, C. R., Reavill, D., & Greiner, E. (2009). *Pneumattractis podocnemis* n. gen., n. sp. (Nematoda: Atractidae) from the Yellow-Spotted Amazon River Turtle, *Podocnemis unifilis* (Testudines: Pelomedusidae). *Comparative Parasitology*, 76, 149–153. <https://doi.org/10.1654/4379.1>
- Cavalcante, P. H. O., Silva, M. T., Santos, E. G. N., Chagas-Moutinho, V. A., & Santos, C. P. (2017). *Orientattractis moraveci* n. sp. and *Rondonia rondoni* Travassos, 1920 (Nematoda: Atractidae), parasites of *Pimelodus blochii* (Osteichthyes, Pimelodidae) from the Acre and Xapuri Rivers, Western Amazon, Brazil. *Parasitology*, 144, 1–11. <https://doi.org/10.1017/S0031182016001736>
- Costa, S. C. G., Motta, C. S., & Gomes, D. C. (1968). Revisão do gênero *Klossinemella* Costa, 1961 (Nematoda, Cobboldinidae), com descrição de uma nova subfamília e de uma nova espécie. *Memórias do Instituto Oswaldo Cruz*, 66, 169–179. <https://doi.org/10.1590/S0074-02761968000200004>
- Gibbons, L. M., Khalil, L. F., & Marinkelle, C. J. (1995). New nematode genus, *Podocnemattractis*, for *Atractis ortleppi* Thapar, 1925 (Cosmoceroidea: Atractidae) and the description of another new species, *P. colombianaensis* from turtles *Podocnemis* spp. in Colombia. *Systematic Parasitology*, 30, 47–56. <https://doi.org/10.1007/BF00009244>
- Gibbons, L. M., Khalil, L. F., & Marinkelle, C. J. (1997). *Paraorientattractis semiannulata* n. g., n. sp. (Cosmoceroidea: Atractidae) from the Large Intestine of the Side-Necked Turtle, *Podocnemis unifilis* Troschel, 1848 (Testudines: Pelomedusidae) in Brazil. *Memórias do Instituto Oswaldo Cruz*, 92, 359–364. <https://doi.org/10.1590/S0074-02761997000300011>
- Gibbons, M. L., & Platt, T. R. (2006). *Rhinoclemmysnema* n. g. and three new species of nematodes of the family Atractidae (Cosmoceroidea), with notes on the helminth fauna of *Rhinoclemmys pulcherrima* (Testudines: Bataguridae) in Costa Rica. *Journal of Helminthology*, 80, 333–340. <https://doi.org/10.1017/JOH2006360>
- González-Solis, D., & Mariaux, J. (2017). *Orientattractis brycini* sp. nov. (Nematoda: Atractidae) from characiform freshwater fishes in Gabon, Africa. *Revue Suisse de Zoologie*, 124, 1–8. <https://doi.org/10.5281/zenodo.322659>
- González-Solis, D., & Moravec, F. (2004). Two new nematode species, *Orientattractis campechensis* n. sp. and *Orientattractis chiapasensis* n. sp. (Nematoda: Atractidae) from cichlid fishes in southern Mexico and Nicaragua. *Journal of Parasitology*, 90, 1443–1449. <https://doi.org/10.1645/GE-3366>
- Khalil, L. F., & Gibbons, L. M. (1988). Two nematodes, *Parattractis hystrix* (Diesing, 1851) and *Buckleyattractis marinkelli* n. g., n. sp. (Atractidae: Cosmoceroidea) from *Podocnemis* spp. in Colombia. *Systematic Parasitology*, 12, 187–198. <https://doi.org/10.1007/BF00007767>
- Leão, S. P. D., Famelli, S., & Vogt, R. C. (2019). Home range of Yellow-Spotted Amazon River Turtles (*Podocnemis unifilis*) (Testudines: Podocnemididae) in the Trombetas River Biological Reserve, Pará, Brazil. *Chelonian Conservation and Biology*, 18, 10–18. <https://doi.org/10.2744/CCB-1273.1>
- Liu, B., Li, Z., & Zhang, L. (2018). A new species of *Orientattractis* (Nematoda: Atractidae) from the tortoise *Indotestudo elongate* (Blyth) in China. *Acta Parasitologica*, 63, 814–818. <http://doi.org/10.1515/ap-2018-0099>
- Moravec, F., Kamchoo, K., & Pachanawan, A. (2015). New nematode species, *Orientattractis mekongensis* n. sp. (Atractidae) and *Neosynodontisia suratthaniensis* n. g., n. sp. (Pharyngodonidae) from freshwater fishes in Thailand. *Systematic Parasitology*, 92, 197–209. <https://doi.org/10.1007/s11230-015-9598-4>
- Petter, A. J. (1966). Equilibre des espèces dans les populations de Nématodes parasites du colon des Tortues terrestres. *Mémoires du Muséum National d'Histoire Naturelle, Series A., Zoologie*, 39, 1–245.
- Sarmiento, L. (1959). Description of *Parattractis hystrix* (Diesing, 1851) gen. nov. (Nematoda: Atractidae) from *Podocnemis dumeriliana*. *The Journal of Parasitology*, 45, 65–68. <http://doi.org/10.2307/3274788>